

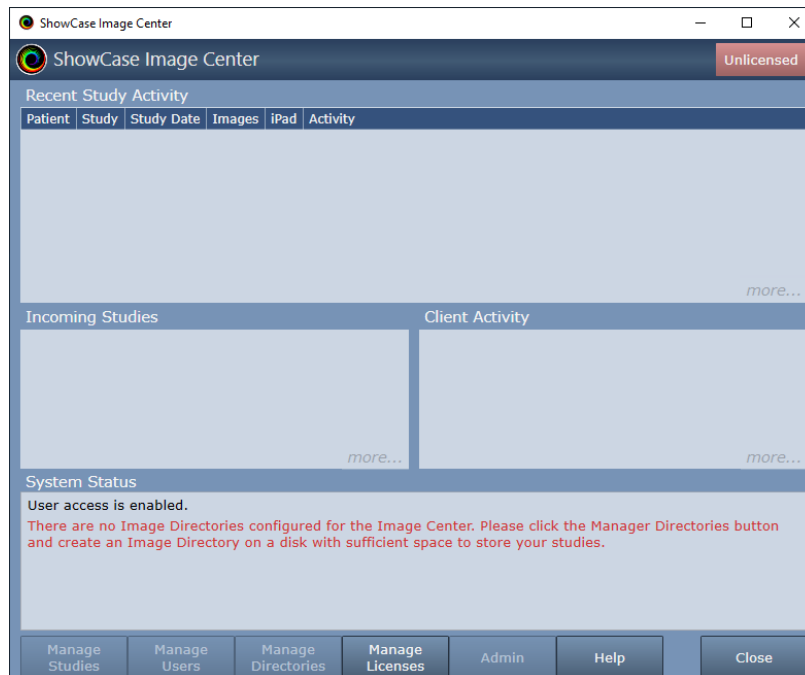


## License Keys

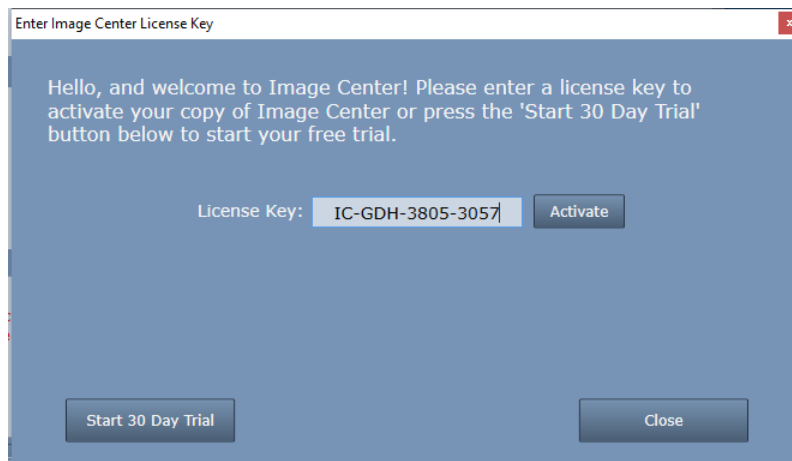
When you purchased your Image Center license, you were sent an email with your license key in it. The key is a simple set of letters and numbers separated by hyphens that looks like “IC-ABC-4321-1234”. You will need your license key to proceed. If you do not have it handy, go get it now. If you’re having trouble locating your license key, please contact [support@triltech.com](mailto:support@triltech.com) for help.

## Licensing A First Time Install

When Image Center is started for the first time, the Console will look like this:



Note the “Unlicensed” status in the Console’s status indicator in the upper right corner. To license your copy of Image Center, click the **Manage Licenses** button:



Enter your License Key (e.g. IC-XYZ-1234-4321) into the text area and click the **Activate** button. A few messages will appear about contacting the license server, the dialog will disappear, and the Console status will change from “Unlicensed” to “Running”. Now that the Image Center is licensed, you can proceed with the rest of the Image Center configuration (setting up Image Directories, Users, etc.).

## Troubleshooting

### Invalid License Key

If you got a message saying your license key is invalid, check your license key email to make sure you’ve entered the correct key. Image Center license keys are of the form “IC-XXX-nnnn-nnnn” where XXX are upper case letters and nnnn are numbers. Image Center license keys always start with the letters “IC”. If you can’t find your email or think the key you’re trying to use is valid, contact [support@triltech.com](mailto:support@triltech.com) for help.

### Not Connected to The Internet

If your computer is not connected to the internet, please connect it to the internet and try again. If this is not possible, see the Manual Licensing section later in this guide.

### Unable to Connect To The Trillium License Server

If your computer cannot reach the Trillium License Server ([www.triltechsupport.com](http://www.triltechsupport.com)) due to site blocking by your IT group or other firewall issues, contact them and have them allow triltechsupport.com through your blocking software. If that is not possible, see the Manual Licensing section later in this guide.

## 30 Day Free Trial

Image Center can also be run under a 30 day free trial. Trial licenses can only be used once on a given computer. They cannot be renewed or reset. If you are running a trial license but it expires, and still need some time to evaluate the software, please contact [support@triltech.com](mailto:support@triltech.com) to request a temporary license.

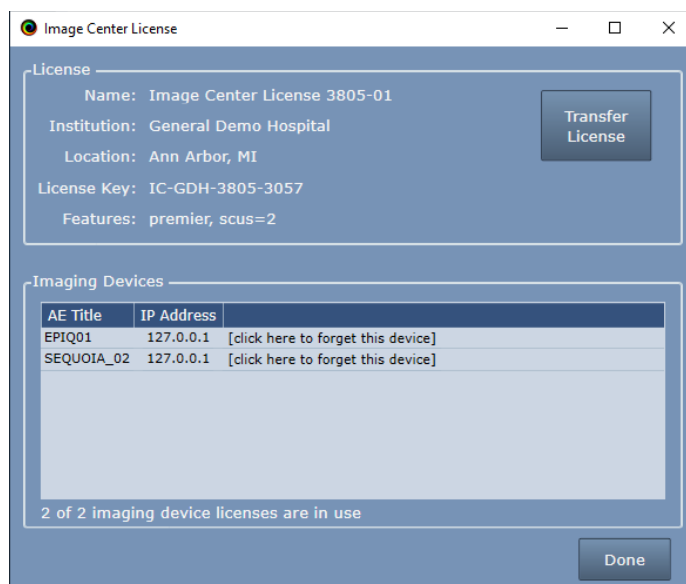
## Managing Imaging Device Licenses

Your Image Center license limits the number of Imaging Devices (DICOM SCUs) that can be connected to your Image Center. The baseline Image Center comes with 2 imaging device licenses. You may have purchased additional imaging device licenses. An Imaging Device license is consumed the first time the device communicates with the Image Center using DICOM, i.e. sending a study or doing a “DICOM Ping” / CECHO.

### Replacing an Imaging Device

Let’s say you’ve just replaced your old ultrasound machine with a new one, and you find it can’t send studies to the Image Center. But you’re no longer using the old machine. How do you fix this?

Open the Image Center console and click the Manage Licenses button:



Under the Image Devices list, click on “**click here to forget this device**” and an imaging device slot will be freed up. You can now send images from your new machine.

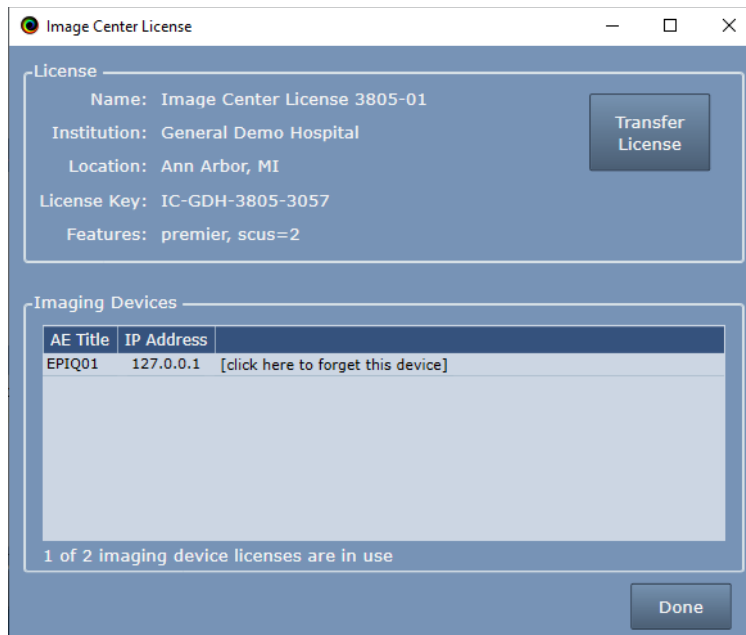
## Adding a New Imaging Device

If you have available slots, just configure your machine to send studies to the Image Center and start using it. If you don't have any available slots, contact [sales@triltech.com](mailto:sales@triltech.com) about purchasing an additional imaging device license. Once you've purchased the license and Trillium has processed your order, reboot your Image Center computer and you will discover a new imaging device slot is available.

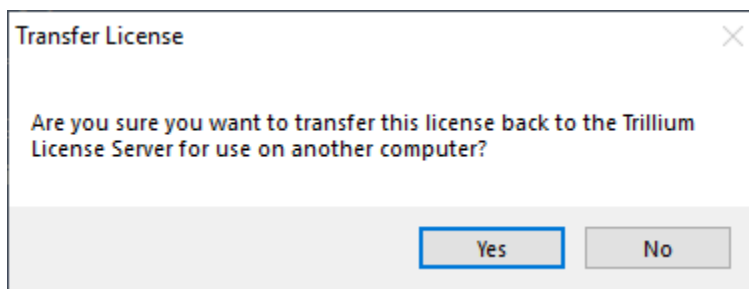
## Transferring Your License to Another Computer

We recommend you migrate your Image Center to the new computer *before* you transfer the license. You can use the 30 day trial on the new computer while transferring all of your image files and settings, and then when everything is in order and good to go, transfer the license.

To transfer your license, open the Image Center Console and click the **Manage Licenses** button:



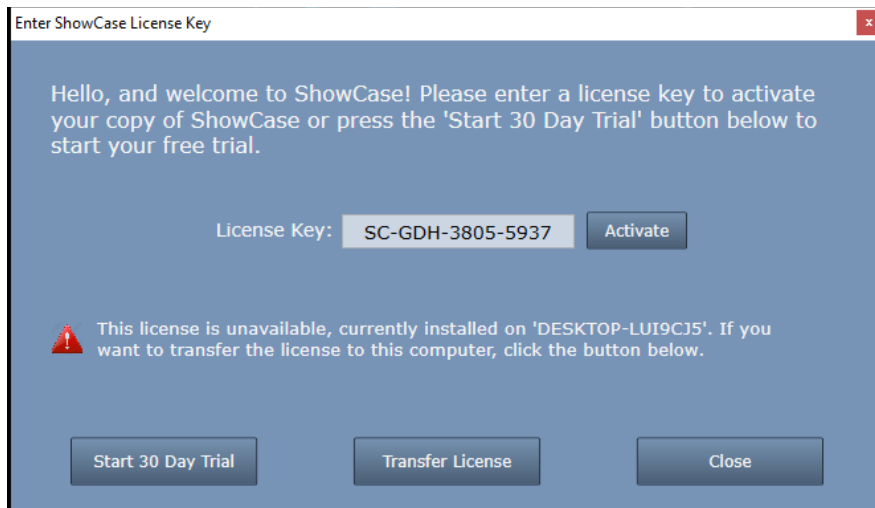
Click the **Transfer License** button. A confirmation dialog will appear:



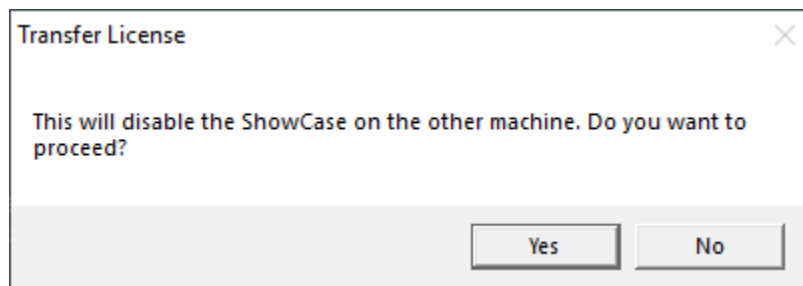
Click **Yes**. Your Image Center will become Unlicensed and will cease to function. It is no longer licensed for use on this computer. Go to your new Image Center, click the Manage Licenses button and enter your license key.

### **My Old Computer Crashed, Died, etc.**

If you no longer have access to your old computer - no worries! Install Image Center on your new computer, click the Manage Licenses button and enter your License Key when prompted. A "license is unavailable" error will appear:



Click the **Transfer License** button:

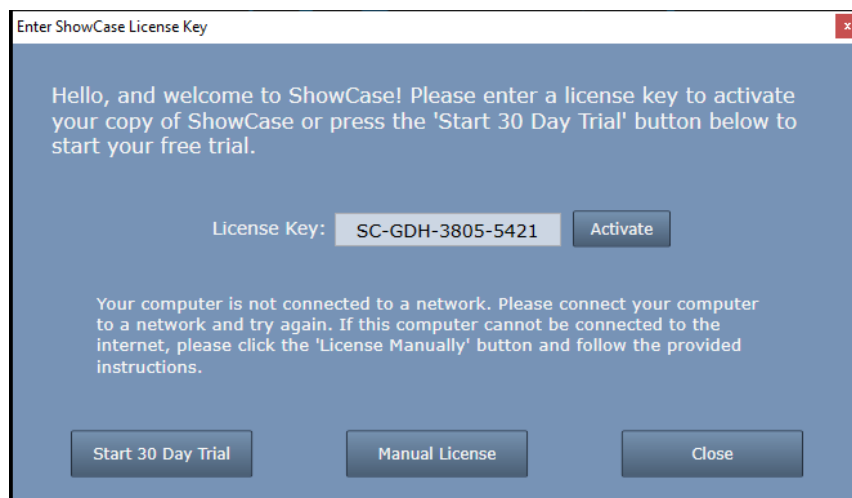


Click **Yes** to disable ShowCase on the old machine and transfer your license to the new machine.

## Manual Licensing

If your computer does not have access to the internet, or access to [triltechsupport.com](http://triltechsupport.com) is blocked, you will need to manually license your copy of Image Center.

First, start the Image Center Console, click the Manage Licenses button, and enter your license as shown previously. Press the Activate button. You will see a message like this and the Manual License button will appear:



Click the **Manual License** button. The manual licensing dialog will appear:



Follow the instructions in the dialog to complete your manual activation. It is recommended that you leave this dialog open while emailing with [support@triltech.com](mailto:support@triltech.com). Should you close Image Center and need to get back to this dialog, simply enter your license key and try to Activate it – the Manual License button will appear and you can then open this dialog.

**SHOWCASE®** is a registered trademark of Trillium Technology, Inc.